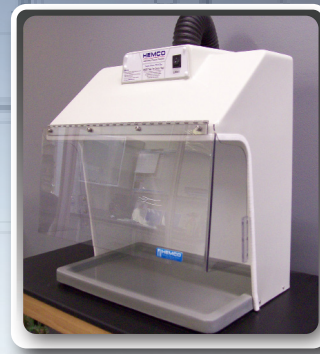


Fume Hoods & Enclosures for Education

by HEMCO®



HEMCO®

Laboratory Planning Solutions

For Prompt
Service Call: (816) 796-2900

www.HEMCOcorp.com

ENCLOSURES FOR EDUCATION

Ductless Demonstration Hood

The Demonstration hood is designed for classroom and group observation situations. The Ductless Demonstration Hood effectively removes fumes and odors while providing a clear, unobstructed view of the interior from all sides.

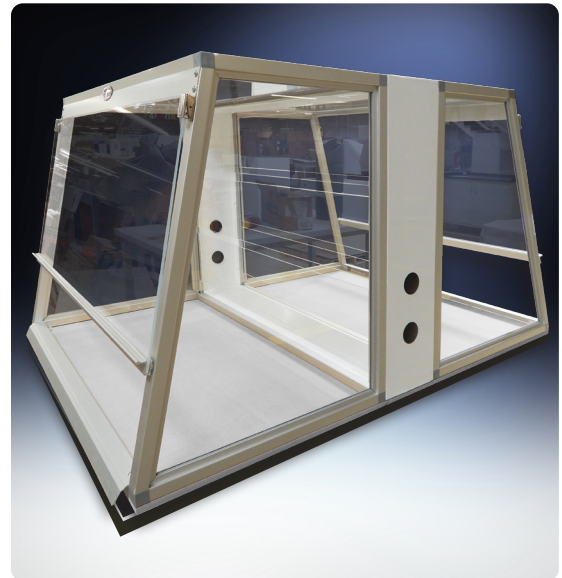
- Constructed with shatterproof clear acrylic, side and rear panels, 24" high and hinged front viewing sash.
- Chemical resistant Fiberglass Housing.
- Equipped with a vapor proof light fixture, and control switch.
- Integral Fan and Activated Carbon Filtration assembly to effectively absorb, fumes, odors, non-hazardous chemical vapors, including control switch and filter change light.
- Dimensions 35" wide X 24" deep X 30.5 " high.



SSE Enclosure

Versatile vented enclosure is ideal for student workstations, weighing operations, and light duty fume hood procedures.

- Energy efficient SSE requires less air from the lab than traditional fume hoods.
- Constructed with chemical resistant metal framing with 1/4" thick clear acrylic side panels, ceiling, and viewing sash allowing clear sight lines through to lab.
- The viewing sash is angled 15 degrees for ease of viewing comfort with 8" reach in opening height. Sash swings up to provide 24" access opening.
- Available as a single unit or back to back assembly in 30", 36" and 48" widths with 30" height. of exhaust air is greatly reduced.



VSE Balance Enclosure

Versatile vented balance enclosure is ideal for critical weighing procedures, pathology, cytology, and histology applications.

- VSE is offered in 24", 36" and 48" widths to accommodate analytical balances, instrumentation and work processes.
- Efficient air flow design with air foil and by-pass, directs fumes and airborne particulate to baffled exhaust ensuring containment and user protection.
- Constructed of chemical resistant metal framing with 1/4" thick clear tempered safety glass side panels and clear acrylic viewing sash.
- Viewing sash is angled 15 degrees for ease of viewing comfort with 8" reach in opening height. sash swings up to provide 20" of access opening.



FUME HOODS FOR EDUCATION

UniFlow LE Dual Entry

Designed to locate between a school prep room and classroom, classroom to classroom, or on an island location. The instructor can perform a demonstration and students can safely observe from opposite side.

- Equipped with vapor proof light and features a unitized dual wall composite resin construction for superior chemical resistance and durability. Surface finish is molded in, Not a paint finish.
- Offered in 48", 60", 72" & 96" widths, and 30", 36", & 48" depths
- Convenient horizontal sliding tempered glass panels on front and rear allow user access and procedure setup
- Optional Base cabinet, Worksurface, Sinks, electrical accessories and service fixtures to meet specific user needs.



UniFlow LE AireStream Fume Hoods

Cost Effective, Energy Efficient Solution for budget sensitive projects.

- Constructed entirely of chemical resistant, flame retardant non-metallic composite resin.
- Features a unitized dual wall construction, eliminating all assembly screws, rivets, brackets, bolts and nuts.
- Offered in 36", 48", 60", 72" & 96" widths.
- Vapor proof LED Light fixture or explosion proof light.
- The aerodynamic face opening with air foil provides uniform air flow into the fume chamber, and thru the Vector AireStream Baffle System, to a bell-shaped exhaust collar.
- U.L. 1805 Classified for Fume Hoods and Cabinets



UniFlow CE AireStream Fume Hoods

The UniFlow CE Hoods are built with all of the features of a full size traditional hood, except in a energy saving compact sizes.

- Available in of 30", 36", 48" & 72" widths, with either vapor proof or explosion proof light and optional built-in exhaust blower.
- UniFlow Superstructure features exclusive unitized dual wall construction for superior chemical resistance, strength, and durability. Meets NFPA-45 Classification with Flame Spread of less than 25 per ASTM E-84.
- The aerodynamic face opening with air foil provides uniform air flow into the fume chamber, and thru the Vector AireStream Baffle System, to a bell-shaped collar.
- U.L. 1805 Classified for Fume Hoods and Cabinets



MicroFlow I, II & III Workstations

The MicroFlow Ductless Workstations are a cost effective solution to addressing small amounts of fumes, odors, non-hazardous chemical vapors and particulate filtration.

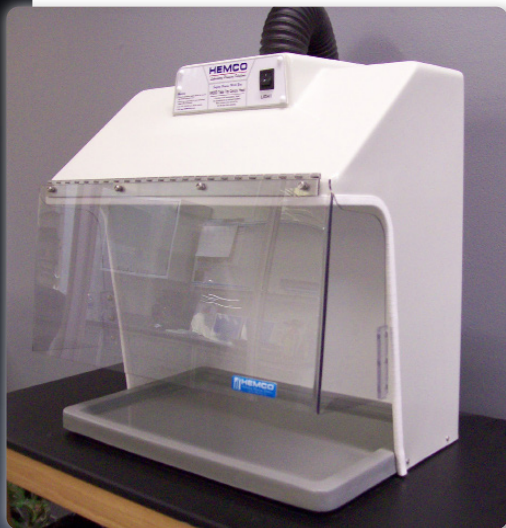
- Designed as a Class I enclosure for clinical, student, forensic, tissue staining.
- Completely self contained with integral recessed work surface to contain spills. Clear shroud with safety viewing sash allows visibility from 3 sides, and provides both safe observation and access to inside work area.
- Operates on 115V AC, or 230V International, Conforms to UL, CSA, & CE requirements.
- Equipped with a built-in fan, carbon filter, pre-filter, switches and Filter change light.



Model 24000 Vented Table Top Hood

Typical Applications for the 24000 vented workstation include: Histology, Microprocessor, Venting for Hot Plates, Microscope Stations, Student Workstations, and Sample Weighing Stations.

- Constructed of chemical resistant, non-metallic advanced composites, hood can be vented or ductless..
- Molded chemical resistant work surface is dished to contain spillage.
- Side and rear walls serve to contain fumes and reduce cross drafts, providing turbulence free work area.
- Vented model has a 3" diameter outlet collar for duct connection
- A selection of accessories are available
- Ductless model is equipped with carbon filter assembly, integral fan, switches and filter change light.
- Dimensions are 24" wide X 15" deep X 24" high.



Canopy Hoods

Canopy hoods are designed to collect and exhaust corrosive vapors, heat, steam, and odors when mounted over areas with water baths, hot plates, or portable equipment.

Standard color: silver beige

- Manufactured from chemical resistant composite materials, or type 304 stainless steel. Canopy hoods are lightweight and can be wall-mounted or suspended from the ceiling over island locations.
- The Canopy Fume Hood's glass smooth surfaces provide superior chemical, corrosion and heat resistance. Uniflow technology provides uniform air flow with less turbulence.
- Optional side panels prevent cross drafts and further improve airflow while providing a way to contain chemical spills.



HEMCO Corporation
711 S. Powell Road
Independence, MO 64056
EDB-12.24

HEMCO

Laboratory Planning Solutions

**Specify UniFlow Fume Hoods
on Your Next Lab Project**

www.HEMCOcorp.com